



A HIDDEN DYNAMIC: EXAMINING THE IMPACT OF FEAR ON MENTAL HEALTH OFFICERS' DECISIONS TO USE POWERS OF COMPULSORY DETENTION

**Dr Pearse McCusker, Senior Lecturer in Social Work,
University of Edinburgh**

**Vicky Soutar, MHO Programme Co-ordinator (job-share),
University of Edinburgh and MHO, City of Edinburgh
Council**

OVERVIEW

Snapshot presentation (15 - 20 min)

Discussion - two groups (30 min)

Plenary (5-10 min)



BACKGROUND

MHO Research Network

- Lack of research into MHO role
- Lack of research by practitioners
- Lack of knowledge exchange between practice and academia

- Rationale for this study



Practice
Social Work in Action

ISSN: 0950-3153 (Print) 1742-4909 (Online) Journal homepage: <https://www.tandfonline.com/loi/cpra20>



A Hidden Dynamic: Examining the Impact of Fear on Mental Health Officers' Decisions to Use Powers of Compulsory Detention

Sophie Allen & Pearse McCusker

To cite this article: Sophie Allen & Pearse McCusker (2020): A Hidden Dynamic: Examining the Impact of Fear on Mental Health Officers' Decisions to Use Powers of Compulsory Detention, Practice, DOI: [10.1080/09503153.2020.1782873](https://doi.org/10.1080/09503153.2020.1782873)

To link to this article: <https://doi.org/10.1080/09503153.2020.1782873>

 Published online: 06 Jul 2020.

 Submit your article to this journal 

 Article views: 96

 View related articles 

 View Crossmark data 

METHODOLOGY AND KEY FINDINGS

Methodology

- Semi-structured interviews
- 8 MHOs



Key findings

- From the literature
- From the interviews



LITERATURE REVIEW

- Role of fear connected to uncertainty
- Fear of risk
- Fear of professional scrutiny
- Inter-professional working
- Subjectivity and stigma
- Time and resources
- Fear of doing harm



FINDINGS FROM INTERVIEWS 1

**Fear of doing
harm**

FINDINGS FROM INTERVIEWS 2

Fear of public, professional scrutiny and blame



FINDINGS FROM INTERVIEWS 3

Fear of Mental Illness (Stigma)



FINDINGS FROM INTERVIEWS 4

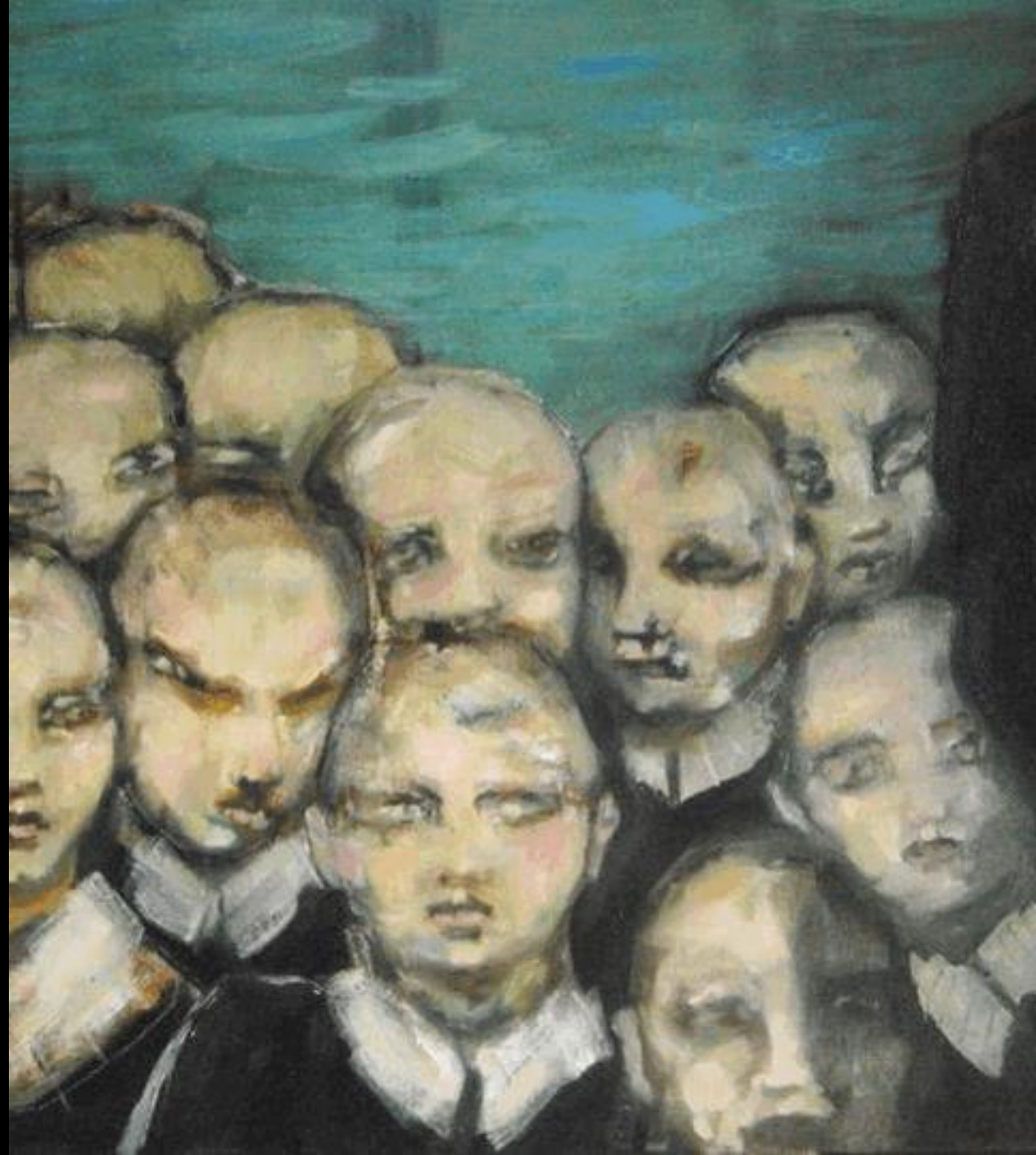
Multi-
Disciplinary
Working



FINDINGS FROM INTERVIEWS 5

Support

Fear in the social
work culture



SMALL GROUP DISCUSSION

Questions:

Does fear feature in your decision-making as an MHO?

If yes, how might support/work cultures be adapted to take account of this?

