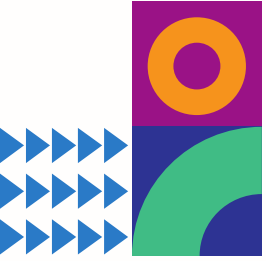


# BASW International Committee

Elected Director – Chair of International Committee – Janet Walker

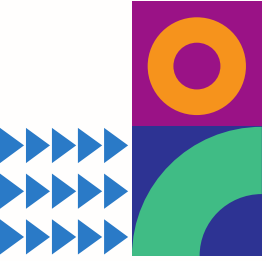




# Overview

- Standing Committee – meeting (minimally) 4 times a year.
- Membership – 15 members
- Role in promoting social work as an international profession:
  - Upholding core values;
  - Commitment to human rights, social justice and the wellbeing of all citizens, transcending geographical and cultural boundaries.
- IC Chair
- Director –and BASW Council.
- Member: BASW Policy, Ethics and Human Rights Committee
- Represent at International Federation of Social Work (IFSW) Europe.





# (Some!) Activities

Working groups/SIGS – Social Work Diaspora (International Recruitment and Induction Standards); Overseas Qualified Social Worker (OQSW)

Work with 4 Nations

Manifesto 2024 - Restore foreign aid contribution back to 0.7% and fulfil international obligations

Decolonisation (and Indigenisation) Group.

Partnership with Commonwealth Organisation for Social Work (COSW)

World Social Work Day – and other activities (e.g. Student Conference – Cultural Competence).

International Development Fund (IDF)

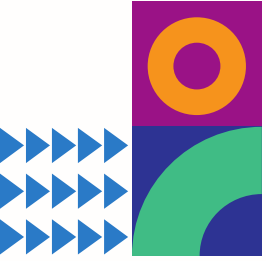
IFSW Europe – Chair as UK representative.

Ukraine: BASW Ukraine Leadership Group:

*UK Social Work and the war in Ukraine; A BASW Briefing on Context, Ethics and Practice under the visa schemes for Ukrainians (2023);*

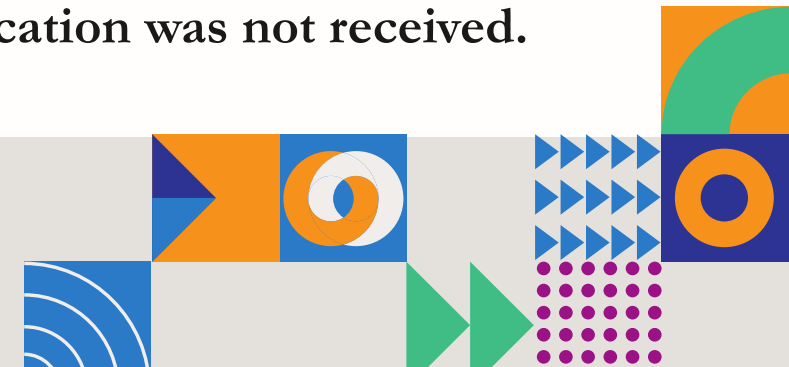
(Through the IDF) - Supporting IFSW Europe Project - Kamjanez-Podilskyj Community Support Centre.

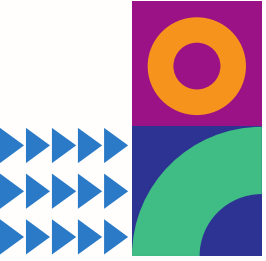




# International Development Fund (IDF) (Created 2014)

- Facilitate the international exchange of skills, knowledge, and expertise (sustained with a £2 per annum, per BASW membership levy).
- Opportunities to apply advertised twice a year.
  - Criteria is not complex but is strictly applied.
  - Full details on the BASW website.
- Applications considered by the IDF Decisions Panel (BASW CEO, Chair International Committee, Chair Finance and Business Development Committee, and the Policy & Research Team Lead).
- October 2022 to September 2023 : 9 applications, all to a very high standard. Four were accepted. Four refused. One was closed when requested clarification was not received.



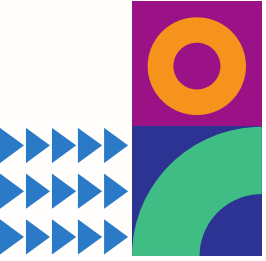


# International Development Fund (IDF)

## Funds awarded:

- £1000 x 2 – Conference attendance
- £9020 – lead by BASW Northern Ireland, an exchange visit to the Jordanian Association of Social Workers (JASW) following several years of support and advice by BASW/BASW NI to JASW, as they continue to develop and grow their association.
- £9300 – lead by SWU to explore and learn from the work and resources of The Thunderbird Partnership, working in mental health and addictions, committed to working with First Nations to address substance use and addiction.
- In addition, following an open offer advertised to BASW members, 19 people were supported with up to £1300 each to attend the IFSW Europe conference in Prague in May 2023.
- Feedback reports available on request from the Policy & Research team





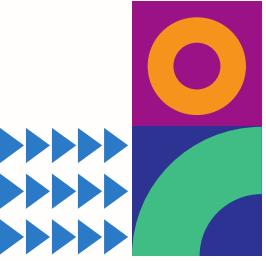
# Work with IFSW (Europe)

- **Work Programme** - e.g. membership; policy development and social actions; networking and lobbying; relations with IFSW; Conference; projects (e.g. New Generation of social works; EU partner – Increasing responsiveness to citizens voices in the social services across Europe)
- **IFSW Representations** – European Social Platform; European Anti-Poverty Network; European Fundamental Rights Platform, Council of Europe; EuroChild; United Nations; IFSW Global Commissions and IFSW Europe Groups (Ethics; Education; Human Rights; Indigenous)
- **‘New’ Challenges** - Eco Social Work and Climate Change; International Collaborative Social Work Learning; recruitment and retention of social worker.
- **Representation at IFSW General Meeting (Panama Conference)** - e.g. BASW Motion - IFSW to challenge historical, political, environment and social issues. This included continuing to support The People’s Charter for an Eco-Social World and mutual support and dialogues, supported by regional and global statements to highlight social work concerns and responses.

**BASW**

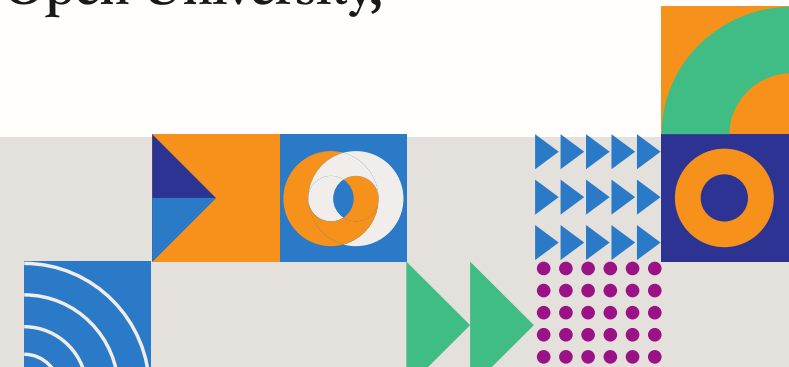
The professional association for  
social work and social workers

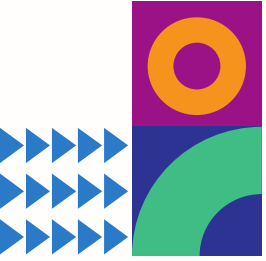




# Conflicts and Humanitarian Disasters

- **BASW responses** - recognition of need to support people at point of need and work towards peace and reconciliation.
- **IFSW General Meeting - BASW Motion - IFSW** to challenge historical, political, environment and social issues. This included continuing to support **The People's Charter for an Eco-Social World** and mutual support and dialogues, supported by regional and global statements to highlight social work concerns and responses.
- **Conflicts and Humanitarian Disasters Conference (BASW England)**; the social work response to Ukraine; the role of social workers in the context of climate change; **'Out of the Shadows'**- Reflections on the impact of disasters on communities - book; *Social Work in Disaster Guidance* with Directors of Adult Social Services (ADASS); *Social Work in Disaster online Training* (BASW, Open University, University of Stirling).





# Thank you

## Q & A

